

FlowLine Bipore[®] **HEPARIN**

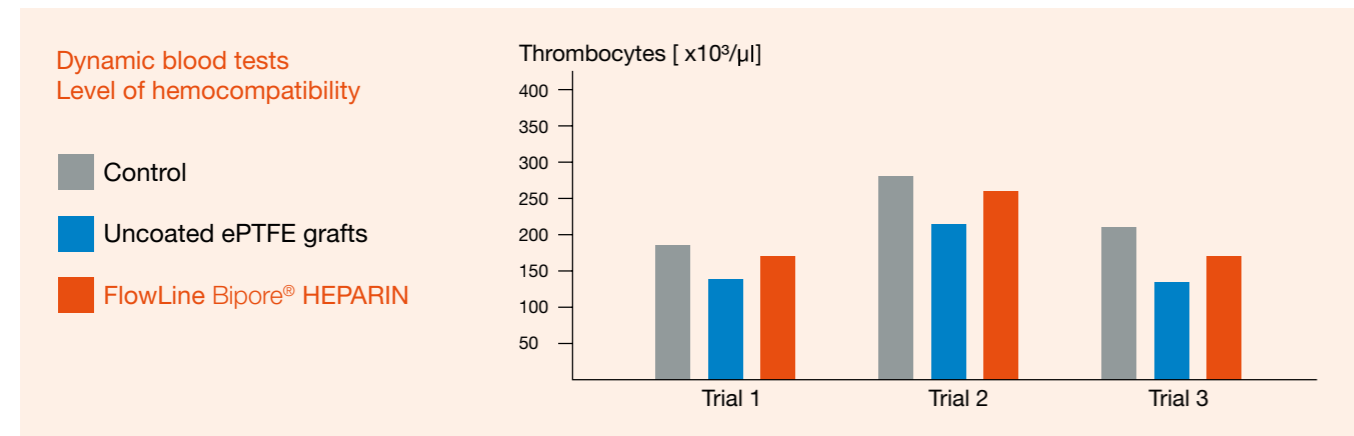
ePTFE Vascular Graft with Heparin Coating

FlowLine Bipore® HEPARIN

ePTFE Vascular Graft with Heparin Coating

Thromboresistant lumen surface for increased graft patency

Covalent bonding and ionic interactions binds Heparin durable to the lumen surface of the FlowLine Bipore® HEPARIN graft. This innovative bonding technique imitates the antithrombogenic effect of the natural endothelium and leads to increased hemocompatibility.



Dynamic blood tests confirm high level of hemocompatibility¹

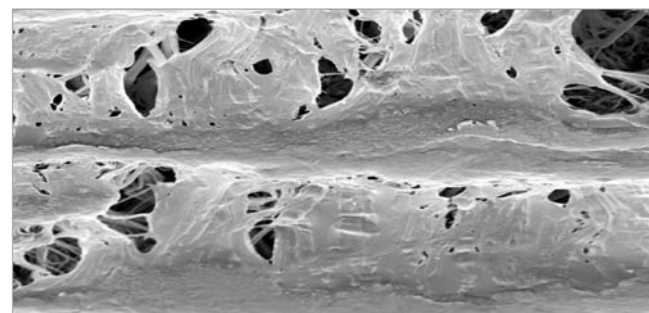
The number of free thrombocytes in blood being exposed to the lumen of FlowLine Bipore® HEPARIN is comparable to the control group.

In uncoated ePTFE grafts there is a decrease in the number of free platelets due to thrombus formation on the lumen surface.

The microscopic image clearly illustrates the advantage of the FlowLine Bipore® HEPARIN grafts over uncoated ePTFE grafts.



Uncoated ePTFE graft:
Thrombus formation after 2 hours of blood contact¹



FlowLine Bipore® HEPARIN:
Significantly reduced platelet adhesion¹



Unique guideline indicating graft diameter and wall thickness



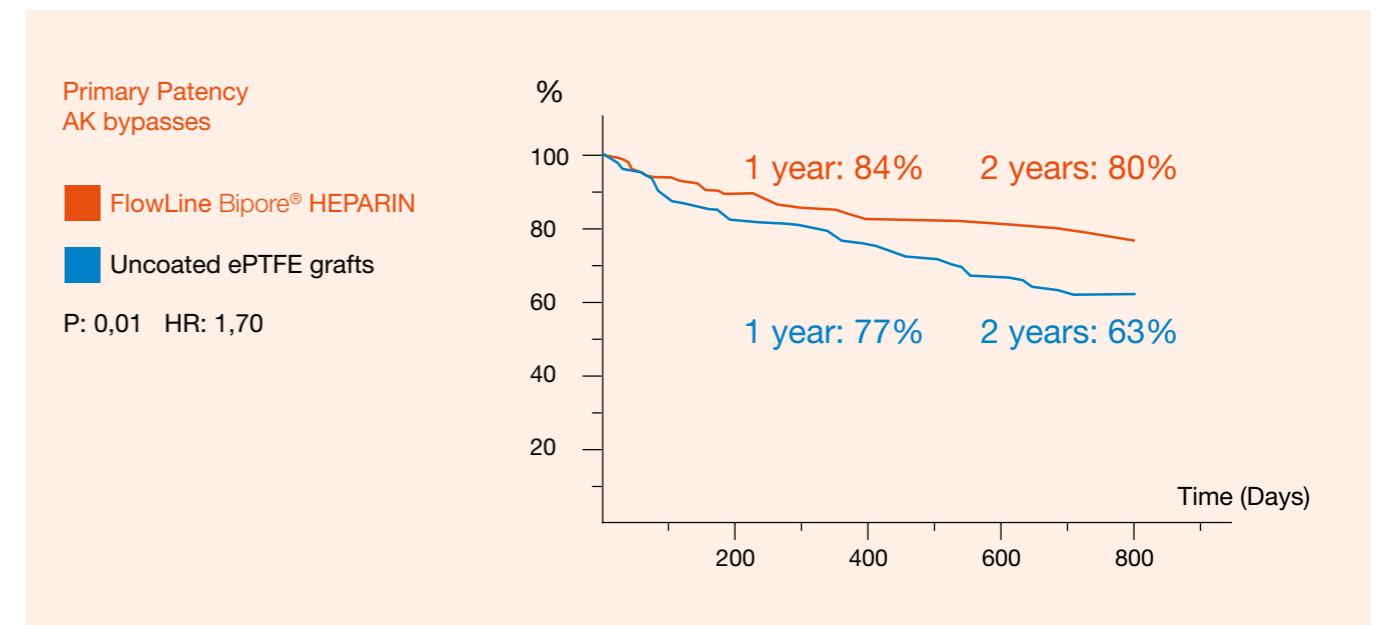
The external reinforcement can easily be removed if required

FlowLine Bipore® HEPARIN provides better patient care

- Excellent and pliable handling and suture behaviour
- Additional ePTFE wrap for enhanced suture retention and high burst strength
- Helical reinforcement ensuring high kinking and compression resistance

The proven alternative with sustained antithrombogenic effect

This results from a prospective, open label, randomised multicentre study comparing FlowLine Bipore® HEPARIN with uncoated ePTFE grafts. More than 500 patients were enrolled and randomised to 6mm, reinforced FlowLine Bipore® HEPARIN and uncoated ePTFE grafts.



„... there is a significant difference [...] in favour of the FlowLine Bipore HEPARIN grafts.“

¹ In vitro studies/dynamic blood test in Chandler Loop by Dr. H.P. Wendel:
Clinical Research Laboratory, Clinic for Thoracic, Cardiac and Vascular Surgery, University Hospital Tübingen

FlowLine Bipore[®] HEPARIN

ePTFE Vascular Graft with Heparin Coating

Ordering information

Quick and reliable delivery of standard products in Europe within 24 hours.

Thin Wall Thin Wall with
spiral reinforcement

| Length (cm) | Diameter (mm) | Catalogue No. | Catalogue No. |
|----------------|------------------|---------------|---------------|
| 40 | 5 | 15TW4005N | 15TW4005S |
| 50 | 6 | 15TW5006N | 15TW5006S |
| 50 | 7 | 15TW5007N | 15TW5007S |
| 50 | 8 | 15TW5008N | 15TW5008S |
| 70 | 5 | 15TW7005N | 15TW7005S |
| 80 | 6 | 15TW8006N | 15TW8006S |
| 80 | 7 | 15TW8007N | 15TW8007S |
| 80 | 8 | 15TW8008N | 15TW8008S |

